

# SUCCESS STORIES START HERE



**SURABAYA  
INTERCULTURAL  
SCHOOL**

## Mission Statement

Surabaya Intercultural School offers an academically rigorous curriculum within a dynamic learning community where students are engaged, enlightened, and empowered to be active and collaborative global leaders



Tromol Pos 2/SBDK  
TEL +62 31 741 4300  
+62 31 741 4301  
FAX +62 31 741 4334  
CEEB CODE 672146  
admin@sis.sch.id

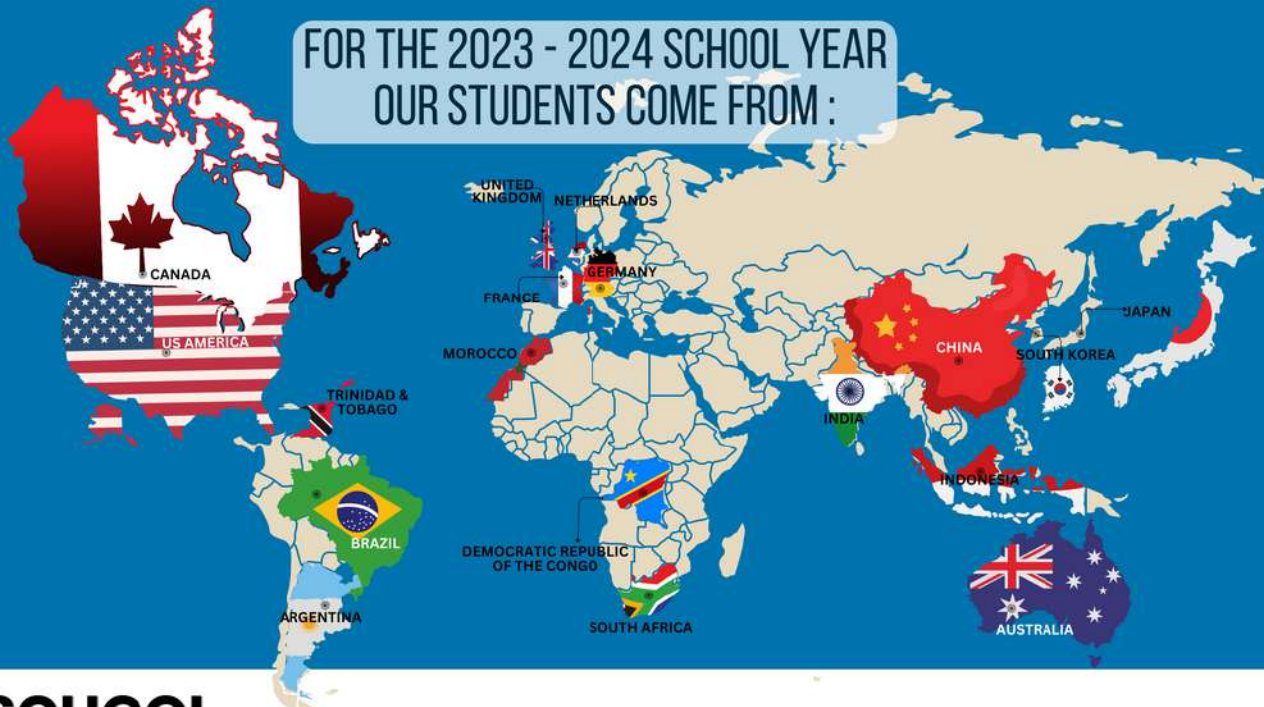


Citraland International Village, Lakarsantri.

**Secondary Principal  
WENDY WOODHURST**

**School Counselor  
RAKHMA WIZATI PUTERI**

# FOR THE 2023 - 2024 SCHOOL YEAR OUR STUDENTS COME FROM :



## THE SCHOOL

Surabaya Intercultural School is a non-profit, independent, coeducational day school offering a university preparatory education from Early Childhood to Grade 12. Led by local and expat faculty of 22 secondary teachers, 16 seniors will be eligible for graduation in the 2023-2024 school year.

SIS was founded in 1971 as the American Consulate School. The name was changed in 1977 to the Surabaya International School which remained until 2014 when the name of the school was changed to the current Surabaya Intercultural School. The school is licensed by the Ministry of Education of Indonesia and accredited by the Western Association of Schools and Colleges (WASC)

## GRADING AND CREDIT

SIS calculates GPA on a 4.0 scale. AP courses are weighted. SIS does not rank. Only courses taken at SIS are used in the calculation of GPA.

A minimum of 26 credits is required for graduation. One credit is equal to a full academic year. By order of the Indonesian Ministry of Education all students must take Bahasa Indonesia each year. Students transferring to high school at SIS receive transfer credit for courses taken at their previous school

LETTER	REGULAR	AP COURSE	GPA
A+	97 - 100	93 - 100	4
A	93 - 96	90 - 92	4
A-	90 - 92	87 - 89	3.7
B+	87 - 89	83 - 86	3.3
B	83 - 86	80 - 82	3
B-	80 - 82	77 - 79	2.7
C+	77 - 79	73 - 76	2.3
C	73 - 76	70 - 72	2
C-	70 - 72	67 - 69	1.7
D+	67 - 69	63 - 66	1.3
D	63 - 66	60 - 62	1
D-	60 - 62	57 - 59	0.7
F	BELOW 60	BELOW 57	1

SUBJECT	GRADUATION REQUIREMENT
ENGLISH	4
MATHEMATICS	3
SCIENCES	3
SOCIAL STUDIES	3
FOREIGN LANGUAGE	2
TECHNOLOGY/BUSINESS	1
FINE ART	1
PHYSICAL EDUCATION & HEALTH	1
ELECTIVES	8
<b>TOTAL CREDITS</b>	<b>26</b>



# THE CURRICULUM

At SIS, the language of instruction is English. SIS offers the IB Primary Years Program (PYP) from Early Childhood to Grade 5. For middle and high school, SIS adopted the Common Core Standards for English Language Arts and Mathematics instruction, Next Generation Science Standards (NGSS) for Science, and the AERO standards for Social Studies and Foreign Language.



SIS also offers a wide variety of AP courses at the high school level; these are college-level courses meeting the College Board curriculum standards developed for the AP program. Covid 19 has impacted our teaching environment, where we had online learning since March 2020. In September 2021 we started to apply a hybrid classroom, and we are back fully on campus since 2022 school year.

2023 marks "the year of Teaching and Learning" for SIS. SIS has an ongoing evaluation process of our teaching, learning, and curriculum development. We are also working toward becoming an Apple Distinguished School.

## COMMUNITY SERVICES AND LEARNING

Surabaya Intercultural School believes that meeting within a particular community and providing service allows students to exchange ideas and benefit from teamwork, achievement, and learning. Community Service and Learning at SIS is a collaborative, well-planned sequence of activities designed to challenge students to show initiative, demonstrate perspective, and develop skills such as cooperation, problem-solving and decisions making. This is achieved primarily through Advisory and co-curricular activities.

LANGUAGE ARTS	MATH	SCIENCE	SOCIAL STUDIES	FOREIGN LANGUAGE	TECHNOLOGY /BUSINESS	FINE ARTS	PHYSICAL EDUCATION	AP CAPSTONE PROGRAM	ELECTIVES
ENGLISH 9	GEOMETRY	BIOLOGY	WORLD HISTORY	FRENCH	STEM	ART I	GENERAL PE	AP SEMINAR	INTERNATIONAL RELATIONS
ENGLISH 10	ALGEBRA II	CHEMISTRY	MODERN WORLD HISTORY	MANDARIN	AP Computer Science Principles	ART II	SWIMMING	AP RESEARCH	SPEECH & DEBATE
ENGLISH 11	BUSINESS MATH	AP BIOLOGY	AP WORLD HISTORY	BAHASA INDONESIA	PROGRAMMING LANGUAGE	SCENERY & SET DESIGN	HEALTH	(Students need to take 4 other AP Classes)	
ENGLISH 12	AP CALCULUS A/B	AP CHEMISTRY	AP MACRO-ECONOMICS	ADVANCE FRENCH	YEARBOOK	ART PORTFOLIO PREPARATION	ADVANCE PE		
AP Language & Composition	AP PRECALCULUS	AP PHYSICS I	AP PSYCHOLOGY	ADVANCE MANDARIN	ROBOTICS	AP ART 2D			
			HUMANITIES	AP CHINESE LANGUAGE & CULTURE	SOFTWARE ENGINEERING	BAND			
			CIVICS			THEATER ART			
			INDONESIAN STUDIES						

# SAT AND AP SCORE DISTRIBUTION

## SCHOOL SUMMARY

	2019	2020	2021	2022	2023
TOTAL AP STUDENTS	53	46	40	38	42
NUMBER OF EXAM	127	112	76	97	102
AP STUDENTS WITH SCORE 3+	48/53	42/46	32/40	32/38	36/42
% OF TOTAL AP STUDENTS WITH SCORE 3+	91	91.3	80	84.2	85.71
% of Total AP Students with Scores 3+ (World Comparison)	60	64	56	61	

## SAT SCORES

	SIS AVERAGE	INTERNATIONAL AVERAGE
EVIDENCE BASED READING & WRITING	636	605
MATHEMATICS	721	671
COMPOSITE	1357	1276

## UNIVERSITY ACCEPTANCES FOR GRADUATES SINCE 2017

### ASIA

ATENEO DE MANILA UNIVERSITY (PHILLIPPINE)  
 CITY UNIVERSITY OF HONG KONG (HONG KONG)  
 EWHA WOMANS UNIVERSITY (SOUTH KOREA)  
 HANYANG UNIVERSITY (SOUTH KOREA)  
 HONG KONG POLYTECHNIC UNIVERSITY (HONG KONG)  
 HONG KONG UNIVERSITY (HONG KONG)  
 HONG KONG UNIVERSITY OF SCIENCE AND TECHNOLOGY (HONG KONG)  
 HULT INTERNATIONAL SCHOOL OF BUSINESS (CHINA)  
 IFA PARIS SHANGHAI (CHINA)  
 INSTITUTO MARANGONI SHANGHAI (CHINA)  
 KOREA UNIVERSITY (KOREA)  
 MANIPAL UNIVERSITY (INDIA)  
 NANYANG ACADEMY OF FINE ARTS (SINGAPORE)  
 NEW YORK UNIVERSITY – SHANGHAI (CHINA)  
 NYU ABU DHABI (UNITED ARAB EMIRATES)  
 SEOUL NATIONAL UNIVERSITY (KOREA)  
 SINGAPORE INSTITUTE OF MANAGEMENT (SINGAPORE)  
 SINGAPORE MANAGEMENT UNIVERSITY (SINGAPORE)  
 STT SAAT (INDONESIA)  
 SUNGKYUNKWAN UNIVERSITY (SOUTH KOREA)  
 THE CHINESE UNIVERSITY OF HONG KONG (HONG KONG)  
 THE CHRISTIAN INTERNATIONAL UNIVERSITY (JAPAN)  
 UNIVERSITAS INDONESIA (INDONESIA)  
 UNIVERSITAS PELITA HARAPAN (INDONESIA)  
 UNIVERSITY OF NOTTINGHAM (CHINA)  
 YONSEI UNIVERSITY (KOREA)

### AUSTRALIA

HILSONG COLLEGE  
 MONASH UNIVERSITY  
 ROYAL MELBOURNE INSTITUTE OF TECHNOLOGY  
 TRINITY COLLEGE MELBOURNE  
 UNIVERSITY OF MELBOURNE  
 UNIVERSITY OF NEW SOUTH WALES  
 UNIVERSITY OF SYDNEY  
 UNIVERSITY OF TECHNOLOGY SYDNEY

### CANADA

MCGUILL UNIVERSITY - QUEBEC  
 SIMON FRASER UNIVERSITY  
 UNIVERSITY OF ALBERTA  
 UNIVERSITY OF BRITISH COLUMBIA  
 UNIVERSITY OF TORONTO  
 UNIVERSITY OF VICTORIA  
 UNIVERSITY OF WATERLOO

### EUROPE

BOCCONI UNIVERSITY (ITALY)  
 ECOLE DUCASSE (FRENCH)  
 HAN UNIVERSITY OF APPLIED SCIENCE (NETHERLANDS)  
 INSA LYON (FRANCE)  
 JÖNKÖPING UNIVERSITY (SWEDIA)  
 KU LEUVEN (BELGIUM)  
 MAASTRICHT UNIVERSITY (NETHERLANDS)  
 UNIVERSITÄTSKLINIKUM AUGSBURG (GERMANY)

### UNITED KINGDOM

CARDIFF UNIVERSITY  
 HULT INTERNATIONAL BUSINESS SCHOOL  
 KING'S COLLEGE LONDON  
 LONDON SCHOOL OF ECONOMICS AND POLITICAL SCIENCE  
 UNIVERSITY OF EAST ANGLIA  
 UNIVERSITY OF EXETER  
 UNIVERSITY OF LEEDS  
 UNIVERSITY OF LONDON  
 UNIVERSITY OF SOUTHAMPTON  
 UNIVERSITY COLLEGE LONDON  
 UNIVERSITY OF MANCHESTER

### UNITED STATES

BABSON COLLEGE  
 BIOLA UNIVERSITY  
 BOSTON COLLEGE  
 BOSTON UNIVERSITY  
 BRANDEIS UNIVERSITY  
 BUCKNELL UNIVERSITY  
 CALIFORNIA STATE POLYTECHNIC  
 CASE WESTERN RESERVE UNIVERSITY  
 COLLEGE OF WOOSTER  
 COLORADO COLLEGE  
 DEPAUL UNIVERSITY  
 DREXEL UNIVERSITY  
 FORDHAM UNIVERSITY  
 GEORGETOWN UNIVERSITY  
 HULT BUSINESS SCHOOL  
 INDIANA UNIVERSITY  
 JOHN HOPKINS UNIVERSITY  
 LAWRENCE UNIVERSITY  
 LEWIS & CLARK COLLEGE  
 IOWA STATE UNIVERSITY  
 LOYOLA MARYMOUNT UNIVERSITY  
 MICHIGAN STATE UNIVERSITY

NEW YORK UNIVERSITY (NYU)  
 NORTHEASTERN UNIVERSITY  
 NOTRE DAME COLLEGE  
 OREGON STATE UNIVERSITY  
 PENNSYLVANIA STATE UNIVERSITY  
 PEPPERDINE UNIVERSITY  
 PURDUE UNIVERSITY  
 RENSSELAER POLYTECHNIC INSTITUTE  
 RHODE ISLAND SCHOOL OF DESIGN  
 SAN DIEGO STATE UNIVERSITY  
 SANTA ROSA JUNIOR COLLEGE  
 SEATTLE UNIVERSITY  
 SYRACUSE UNIVERSITY  
 TEMPLE UNIVERSITY  
 UNIVERSITY OF ARIZONA  
 UNIVERSITY OF CALIFORNIA-BERKELEY  
 UNIVERSITY OF CALIFORNIA-DAVIS  
 UNIVERSITY OF CALIFORNIA-IRVINE  
 UNIVERSITY OF CALIFORNIA-LOS ANGELES  
 UNIVERSITY OF CALIFORNIA-MERCED  
 UNIVERSITY OF CALIFORNIA-RIVERSIDE  
 UNIVERSITY OF CALIFORNIA-SAN DIEGO  
 UNIVERSITY OF CALIFORNIA-SANTA BARBARA  
 UNIVERSITY OF CALIFORNIA-SANTA CRUZ  
 UNIVERSITY OF CINCINNATI  
 UNIVERSITY OF CONECTICUT  
 UNIVERSITY OF DELAWARE  
 UNIVERSITY OF ILLINOIS URBANA CHAMPAIGN  
 UNIVERSITY OF MARYLAND-BALTIMORE  
 UNIVERSITY OF MASSACHUSSETS  
 UNIVERSITY OF MINNESOTA  
 UNIVERSITY OF NOTRE DAME  
 UNIVERSITY OF OREGON  
 UNIVERSITY OF PENNSYLVANIA  
 UNIVERSITY OF PORTLAND  
 UNIVERSITY OF ROCHESTER  
 UNIVERSITY OF SAN FRANCISCO  
 UNIVERSITY OF SOUTHERN CALIFORNIA  
 UNIVERSITY OF TEXAS AT AUSTIN  
 UNIVERSITY OF VIRGINIA  
 UNIVERSITY OF WASHINGTON  
 UNIVERSITY OF WISCONSIN-MADISON  
 UNIVERSITY-POMONA  
 UTAH STATE UNIVERSITY  
 VIRGINIA COMMONWEALTH UNIVERSITY

\* Graduating class is typically around 17 students, therefore we use a 6 year period of university admissions